



ECONOSTAT

A COMPREHENSIVE WEB-BASED DATA NAVIGATION
AND ANALYSIS APPLICATION



**GLOBAL
INSIGHT**



▶ ECONOSTAT

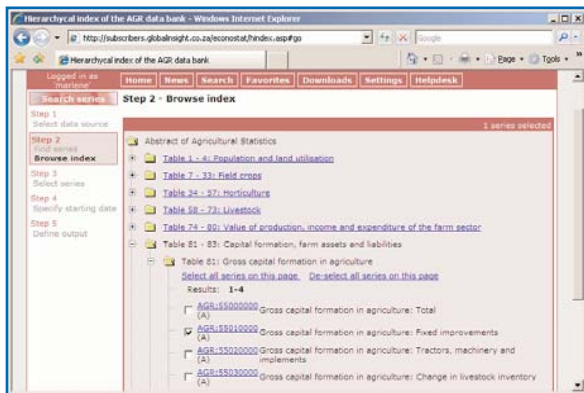
EconoStat is a Web-based data navigation and analysis application that provides subscribers with the most up-to-date, easy access to historical economic and socioeconomic time-series data. Continuous data evaluation and validation checks guarantee timely, accurate, and prompt data delivery. Historical revisions and changes to units of measurements, base years, definitions, and reporting criteria are implemented as they become available. Our data specialists act as a link between the data sources and you.

EconoStat allows you to focus on data analysis without the added concern of data accumulation and evaluation, thereby increasing your productivity. The ease of use and simple navigation give fast and reliable access to accurate data.

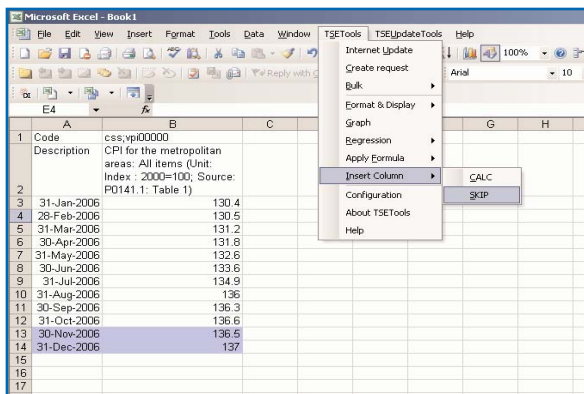
▶ DATA MANIPULATION

EconoStat provides easy access to time-series data by either using the TSETools Excel® add in or by accessing the EconoStat Web interface.

Use the functions in the dropdown list to perform calculations and data updates, draw graphs, edit formats, and activate the Help function.



Extract data and perform calculations directly from the EconoStat Web interface.



Use TSETools to perform calculations and access data from the EconoStat Web interface. Changed values or new data points are highlighted upon update.

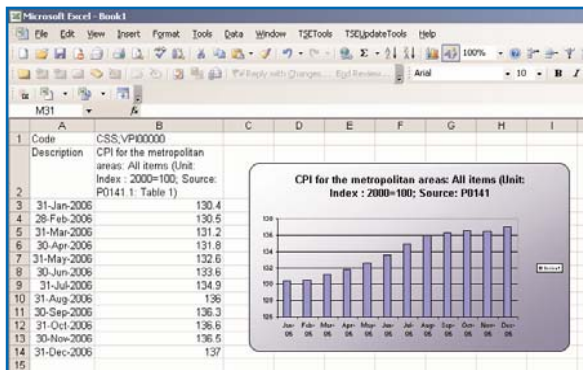
DATA ACCESS AND MANIPULATION

- **Navigation:** Easy-to-use dropdown menu within the Web interface to locate the publication and data series required
- **Search:** Do a keyword or a code search
- **Quick views:** Get a preview of the selected data series with a graph on the last 10 data points (option to expand)
- **Data retrieval:** Define output variables—time, orientation, or output type (Excel, browser)
- **Calculations:** Use TSETools to perform calculations at the point of data extracting
- **CALC:** Define your own calculations, which will be updated with the normal data update
- **SKIP:** Your own defined calculations or text inserted into this column is not affected by data updates
- **Data updates:** Select specific data sets to update or run a bulk update across multiple worksheets
- **Highlight changes:** Upon data updates, any changed values or additional data points are highlighted

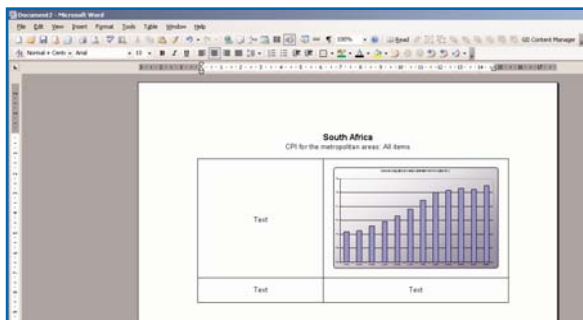
▶ GRAPHING FUNCTIONALITY

The TSETools graphics function offers a convenient and easy way to create and maintain graphs within Excel. By making charts that auto-expand, updated data tables will be reflected in the linked graph. Charts are exported in standard picture format and can be imported into other applications, such as Microsoft® Word or PowerPoint®.

Importing charts into other applications simplifies the process of writing reports or presentations. Once a template is created, the exported Excel graphs are updated automatically within the other applications upon opening the file.



Create graphs with TSETools and format using normal Excel formatting.



Import TSETools graphs into other applications and link to the data in Excel to reflect data updates.

▶ DATA

EconoStat contains economic and socioeconomic time-series data from a wide spectrum of sources for different frequencies. Navigation is simplified by arranging data series to correspond to the layout of the physical publications.

GRAPHING CAPABILITIES:

- Create graphs in a new sheet
- Append series to existing graphs
- Export multiple charts by using the Bulk Export function
- **Auto-expand:** Make chart auto-expanding to reflect added data points
- **Automation:** Import and link graphs and tables to other applications, such as Microsoft Word or PowerPoint, to refresh with the latest data
- **Excel:** Use normal Excel functionality to customise graphs

EXAMPLES OF SOUTH AFRICAN DATABANKS:

- Abstract of Agricultural Statistics, Department of Agriculture
- NAAMSA vehicle sales
- External trade, Department of Customs and Excise
- Housing price indices, ABSA
- Mineral production and sales data, Minerals Bureau
- National financial accounts, South African Reserve Bank
- Statistical releases from Statistics South Africa
- South African general macroeconomic indicators, Quarterly Bulletin, and Bank Supervision, South African Reserve Bank
- Steel and engineering industries data, SEIFSA
- Preliminary trade statistics, Department of Customs and Excise

EXAMPLES OF INTERNATIONAL DATABANKS:

- Developed economies and emerging markets data
- Foreign exchange data
- International financial statistics, IMF
- OECD main economic indicators
- World Bank indicators

▶ CONTACT US!

For more information, please contact the IHS Global Insight South Africa team:

Global Insight Southern Africa (Proprietary) Limited
Building 6, Highgrove Office Park
50 Tegel Avenue, Highveld Technopark Centurion
Pretoria, 0157 South Africa
Phone: +27 (0)12 665 5420
Fax: +27 (0)12 665 5421
E-mail: info@ihsglobalinsight.co.za

THE POWER OF PERSPECTIVE

ABOUT IHS GLOBAL INSIGHT: IHS Global Insight (www.ihsglobalinsight.com) provides the most comprehensive economic and financial information available on countries, regions, and industries available from any source. IHS Global Insight's immediate and insightful analysis of market conditions and key events enables innovative and successful decision making for clients around the world. IHS Global Insight employs approximately 700 employees in 13 countries.

CONTACT US

Web: www.ihsglobalinsight.com

E-mail: info@ihsglobalinsight.com

NORTH AMERICA

U.S./Canada 1 800 933 3374

EUROPE

Frankfurt +49 (0)69 20973 0
London +44 (0)20 7452 5000
+44 (0)20 8544 7800
Milan +39 02 86481 1
Paris +33 (0)1 55 45 2600

AFRICA

Pretoria +27 (0)12 665 5420

MIDDLE EAST

London +44 (0)20 7452 5000

ASIA

Beijing +86 10 5907 0689
Gurgaon +91 124 454 2600
Shanghai +86 21 5228 1470
Singapore +65 6430 6621
Tokyo +81 (0)3 3237 3841